

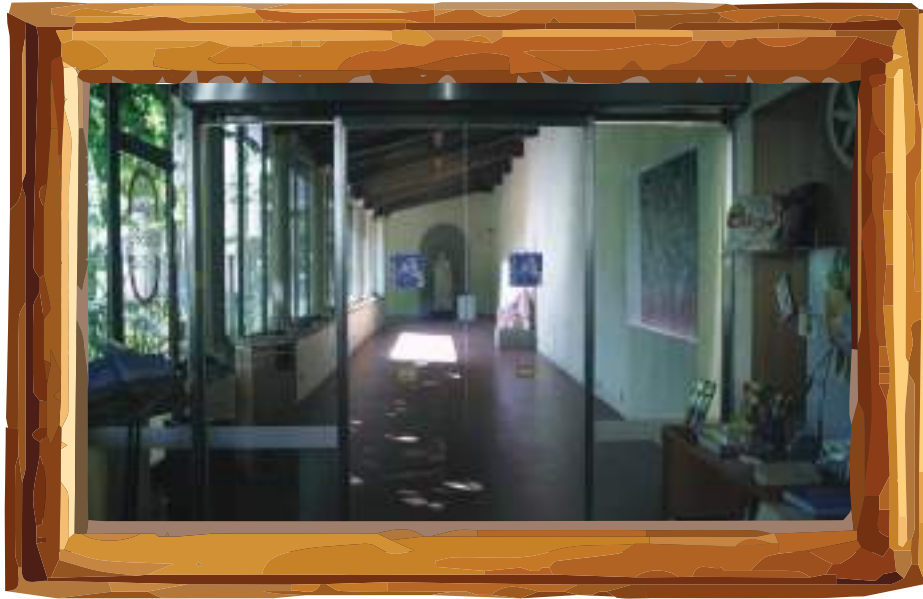


AS SOON AS YOU ARRIVE AT
THE MUSEUM THERE IS A BIG
BLACK SIGN.

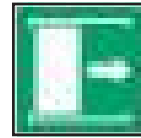


HERE YOU CAN COLLECT YOUR TICKET.





THE GLASS DOOR OPENS
AUTOMATICALLY.



HERE IS THE CORRIDOR .

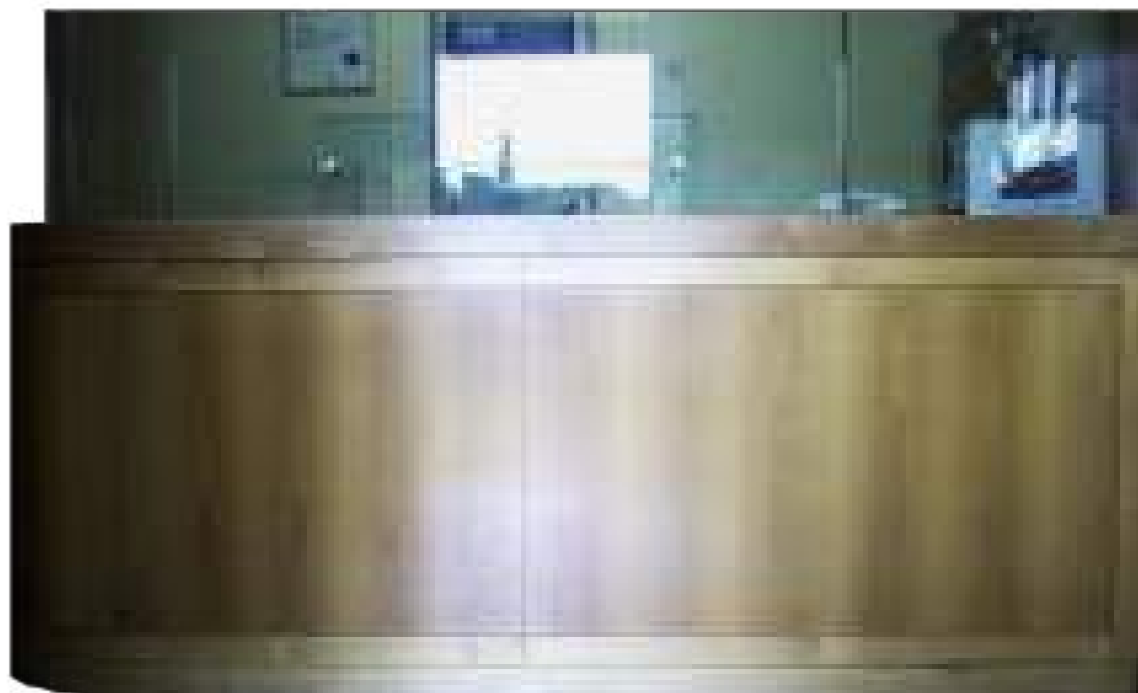
AFTER THE CORRIDOR HERE IS THE VIEW OF THE OUTSIDE.



THIS IS HOW IT WAS IN THE PAST .

THESE ARE THE REMAINS OF THE AMPHITHEATRE, THE LARGEST BUILDING FOR SHOWS IN THE CITY OF AREZZO. A LONG TIME AGO THE AMPHITHEATRE WAS VERY HIGH AND HAD MANY STEPS WHERE THE SPECTATORS USED TO SIT, LIKE IN A STADIUM!

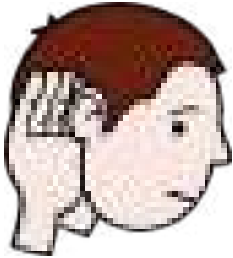
HERE IS WHERE YOU CAN ASK FOR THE KEYS OF THE CLOAKROOM.



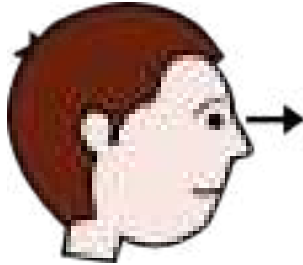
THE MUSEUM CONTAINS MANY FINDINGS ABOUT THE CITY OF AREZZO.

TAKE YOUR TIME, YOU HAVE ALL THE TIME YOU NEED TO WATCH WHAT YOU LIKE.

IN ANY PART OF THE MUSEUM:



YOU CAN LISTEN



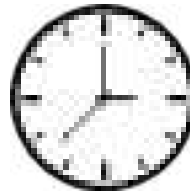
YOU CAN WATCH



YOU CAN SIT DOWN



YOU CAN NOT TOUCH THE OBJECTS



THE PROPOSED ROUTE TAKES FROM 45 MINUTES TO AN HOUR

ON THE GROUND FLOOR THERE IS A LARGE CORRIDOR WHERE YOU CAN MAKE MANY MEETINGS, FOR EXAMPLE...

THE NEWBORNS OF CASTELSECCO

LOOK CAREFULLY AT THESE TERRACOTTA OBJECTS, WHAT DO THEY LOOK LIKE TO YOU?

THEY ARE CHILDREN IN SWADDLING CLOTHES,

ON ONE OF THESE BABIES THE CRAFTSMAN HAS SHAPED A BROOCH, WHICH IS STILL USED TODAY TO HOLD THE FABRIC.



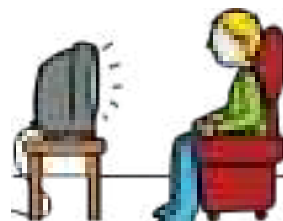
OR... THE ETRUSCAN SPHINX

IT IS A STRANGE CREATURE:
IT IS PARTLY A WOMAN, PARTLY A LION AND
PARTLY.. YOU SAY IT!

IT'S CALLED "SPHINX"
AND IT WAS FAMOUS FOR
HER VERY DIFFICULT
RIDDLES.



THERE IS A ROOM INSIDE THE MUSEUM WHERE YOU
CAN SEE A VIDEO ABOUT THE CITY OF AREZZO



AT THE END OF THE MAIN CORRIDOR THERE ARE THE BATHROOMS



ON THE GROUND FLOOR YOU CAN SEE OTHER BEAUTIFUL WORKS,
FOR EXAMPLE...

THE MOSAIC OF NEPTUNE

IMAGINE THE KING OF THE SEA WITH HIS TRI-
DENT, ON A CHARRIOT SHAPED LIKE A SHELL

PULLED BY FOUR HORSES WITH
A FISH TAIL.

THIS WAS AN ANCIENT FLOOR
OF THE SPA OF AREZZO

AND IT WAS MADE WITH MANY
SMALL BLACK AND WHITE
STONE TESSERAE.





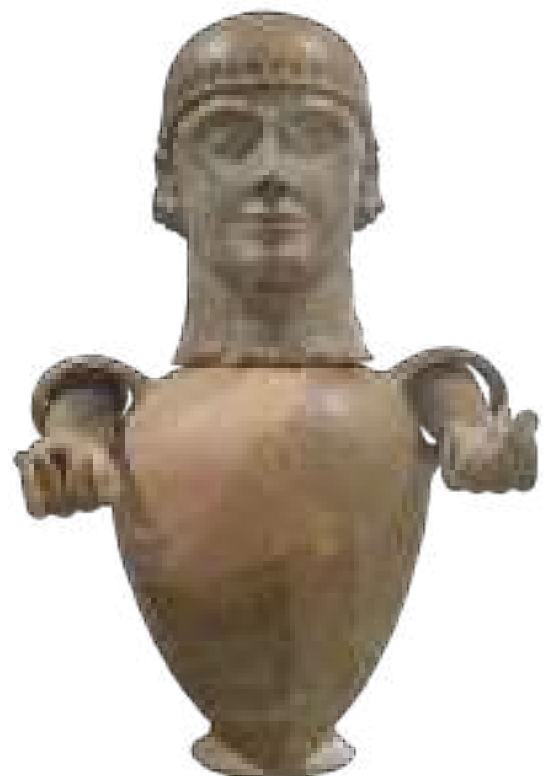
THESE STAIRS WILL TAKE YOU
TO THE UPPER FLOOR



IF YOU CONTINUE ALONG THE PATH
YOU WILL MAKE NEW ENCOUNTERS ...

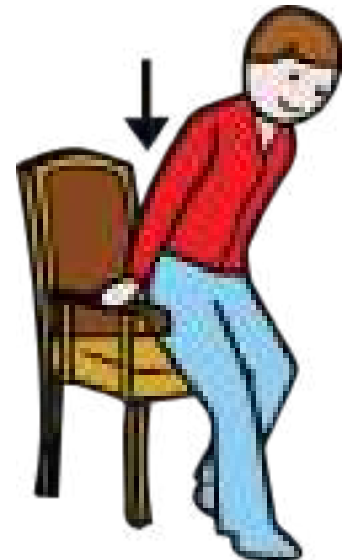
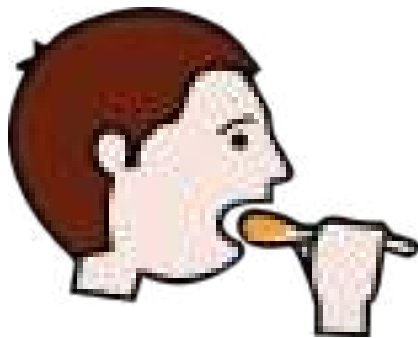
LOOK HOW STRANGE THIS VASE IS,
IT HAS A LID IN THE SHAPE OF A HEAD
AND IN ITS HANDLES THE ARMS
ARE INSERTED.

WHEN AN ETRUSCAN DIED, HIS BODY
WAS BURNT AND THE ASHES WERE
PLACED INSIDE THE VASES LIKE THESE.





UPSTAIRS THERE IS A PLACE WHERE YOU CAN EAT, SIT AND REST



HERE YOU ARE , YOUR JOURNEY IS ABOUT TO END...

THIS LARGE VASE COMES FROM ANCIENT GREECE AND IT WAS PAINTED BY ONE OF THE MOST FAMOUS CERAMISTS OF ATHENS: EUPHRONIOS.

ON THE BODY OF THE VASE YOU CAN SEE A BATTLE BETWEEN THE AMAZONS (WARRIOR WOMEN) AND HERCULES WITH HIS FRIEND TELAMONE.



PERFECT! YOU ARE AT THE LAST STAGE: THE CHIMERA OF AREZZO.

IT IS A LARGE BRONZE STATUE FOUND IN THE CITY AND IT IS A MONSTROUS CREATURE, RELATED TO THE SPHINX AND, LIKE HER, IT IS FORMED BY SEVERAL ANIMALS. YOU CAN SEE THE ORIGINAL STATUE IN FLORENCE, AT THE ARCHEOLOGICAL MUSEUM. THE STATUE THAT YOU SEE IS VERY SIMILAR TO THE ORIGINAL ONE: IT IS MADE OF CHALK AND WAS MADE ALMOST 100 YEARS AGO.



HERE WE ARE, YOU HAVE FINISHED YOUR VISIT, COME DOWN-STAIRS AND DO NOT FORGET TO TAKE YOUR PERSONAL BELONGINGS AT THE CLOAKROOM, WE HOPE YOU HAD FUN!



TO BETTER ORGANIZE YOUR VISIT, YOU CAN CALL NO. 057520882

POLO MUSEALE
della TOSCANA

ARCHEO
AREZZO
museo e anfitratto

LICEO
ARTISTICO
COREUTICO
SCIENTIFICO
QUADRIENNALE

